

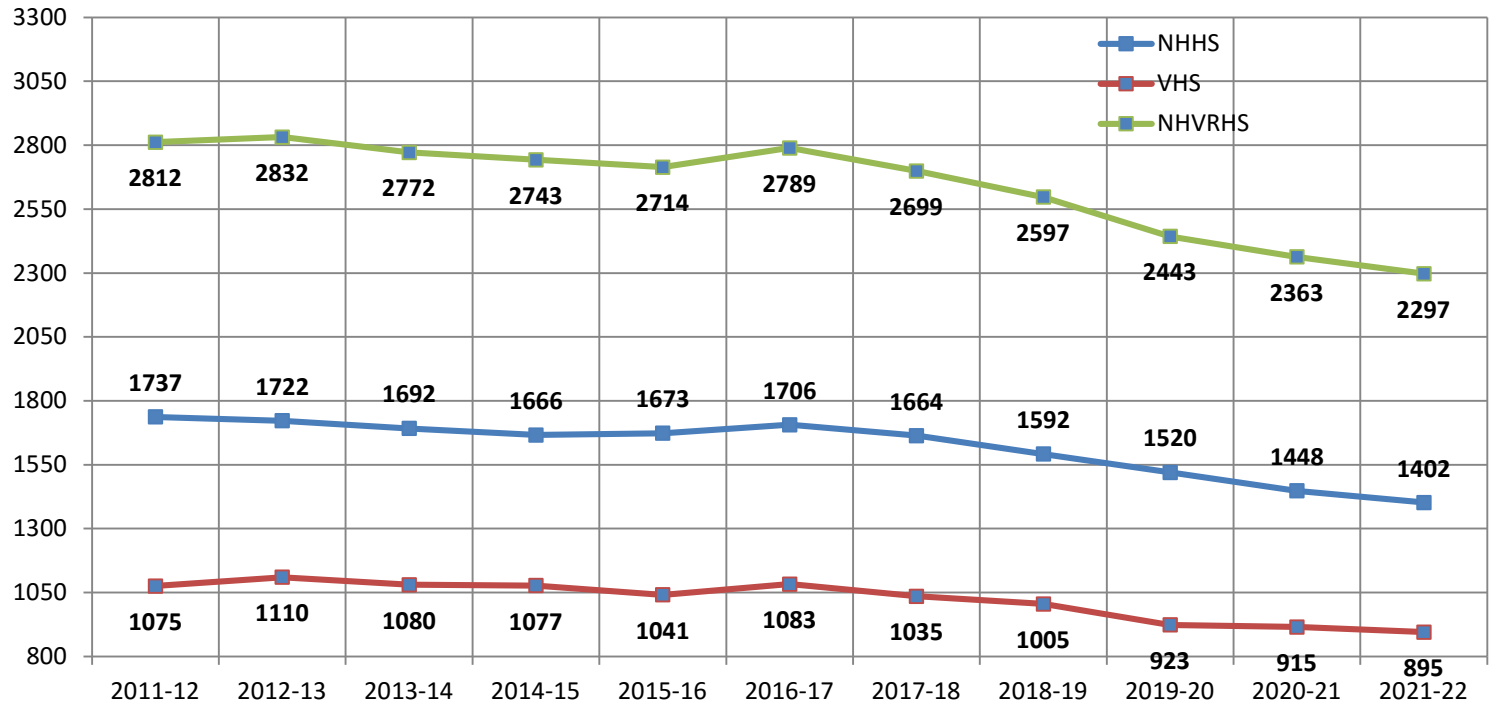


Demographic and Facility Study



February, 2017
Ross Haber and Associates

2000			2011			2015	
Town	Permits	CO's	Permits	CO's	Permits	CO's	
Bethlehem	17	39	0	1	0	2	
Califon	1	0	1	0	0	0	
Clinton Town	1	17	0	0	0	2	
Clinton Township	83	154	0	2	3	1	
Franklin Townshp	22	6	0	2	3	5	
Glen Gardner	1	0	1	0	0	0	
Hampton	1	2	0	0	0	1	
High Bridge	2	0	0	0	12	0	
Lebanon Boro	15	17	0	54	0	0	
Lebanon Township	49	33	2	2	5	4	
Tewksbury	35	36	3	3	3	8	
Union	22	44	0	0	2	4	
Total	249	348	7	64	28	27	



North Hunterdon HS and Sending Districts							
	2011-12	2016-17	Change	Percent	2021-22	Change	Percent
			Students			Students	
NHHS	1,695	1,706	11	0.65%	1,402	-304	-17.82%
Bethlehem	484	359	-125	-25.83%	334	-25	-6.96%
Clinton Town	496	436	-60	-12.10%	460	24	5.50%
Clinton Township	1,600	1,299	-301	-18.81%	1,280	-19	-1.46%
Franklin Township	297	284	-13	-4.38%	262	-22	-7.75%
Lebanon Boro	86	90	4	4.65%	89	-1	-1.11%
Union Township	497	440	-57	-11.47%	427	-13	-2.95%

Net Loss = 360

Voorhees HS and Sending Districts							
	2011-12	2016-17	Change	Percent	2021-22	Change	Percent
			Students			Students	
VHS	1,050	1,083	33	3.14%	896	-187	-17.27%
Califon Boro	138	93	-45	-32.61%	79	-14	-15.05%
Hampton Boro	138	148	10	7.25%	178	30	20.27%
High Bridge Boro	395	391	-4	-1.01%	404	13	3.32%
Lebanon Township	747	622	-125	-16.73%	633	11	1.77%
Tewksbury Twp	707	571	-136	-19.24%	507	-64	-11.21%

Net Loss = 211