



The Supportive Housing Association of New Jersey

Supportive Housing

Community Housing with Supports
For People with Special Needs

www.shanj.org

Diane Riley diane.riley@shanj.org





The Supportive Housing Association of New Jersey

SHA Represents:

Member Organizations

Developers
Support Agencies

Corporate Vendors

.....

Consumers/families (our compass)





What is Supportive Housing?

Supportive housing is a philosophy and model of community housing plus support that helps individuals with disabilities live **as independently as possible**. Tenants live in affordable housing with the individualized resources they need to remain independent and to stay physically and mentally healthy.

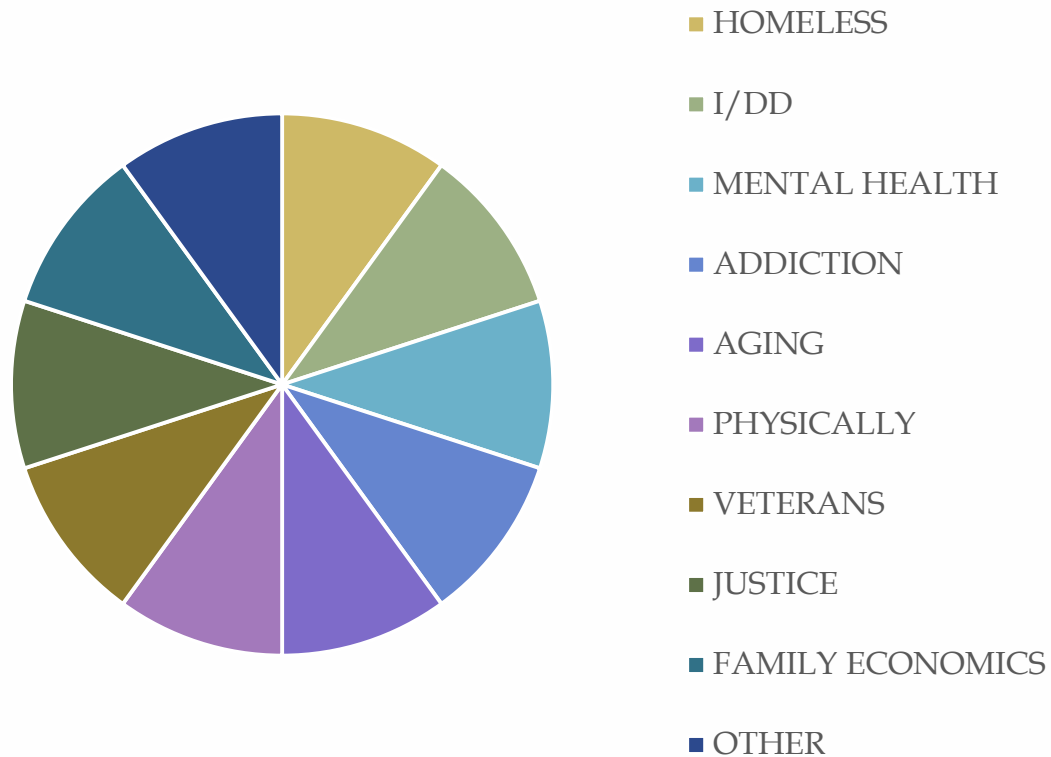
Key Elements:

- Control of your own housing
- Community Integration
- Individualized services
- Permanent and Affordable
- Choice





WHO NEEDS SUPPROTIVE HOUSING





The Supportive Housing Association of New Jersey

AFFORDABLE



AVAILABLE

ACCESSIBLE

ACCOMMODATIONS





The Supportive Housing Association of New Jersey

THREE LEGGED STOOL

- Capital Financing
 - NJ Housing & Mortgage Finance Agency (State dollars and LIHTC)
 - HUD (Federal dollars)
 - Private Lending (Banks, Foundations)
- Operations – Housing Vouchers
 - What is needed to pay housing expenses (mortgage, rent, utilities, home maintenance etc)
- Supports (Integrated Care)
 - Supportive Housing Services (Medicaid)





The Supportive Housing Association of New Jersey

Housing Hub

(34 unread) - dianenriley@yahoo.com x | Workshop Presentation - May 13 x | New Tab x | Housing Hub - SHA x

Not secure | shanj.org/housing-hub/

Supportive Housing Association
of New Jersey

HOME

SHA NJ

MEMBERSHIP

POLICY

EVENTS

HOUSING HUB

CONTACT SHA

Housing Hub

» HOUSING HUB

The Supportive Housing Association of New Jersey expresses its deepest gratitude to the New Jersey Council on Developmental Disabilities for the grant funding to develop a variety of housing resources. We hope the resources provided in the Housing Hub will encourage and enable individuals and families to establish a home that promotes the utmost independence. Please share this information widely and do not hesitate to contact us with your recommendations and additional ideas.



Housing Hub

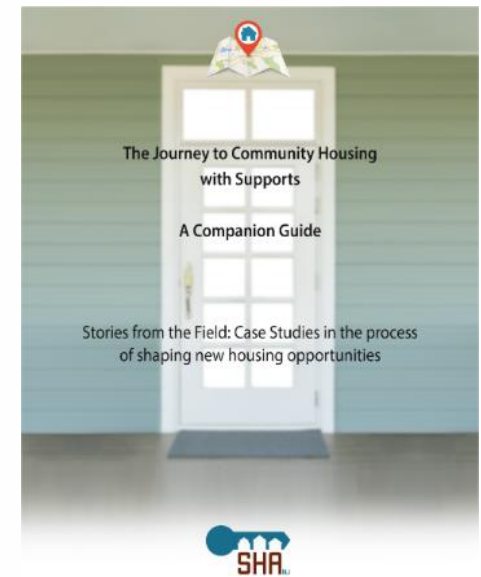
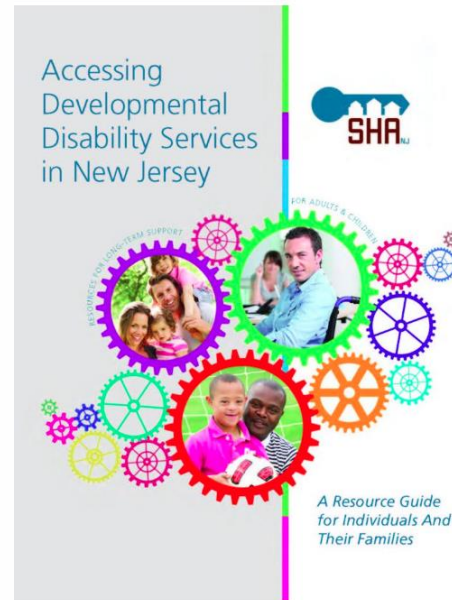
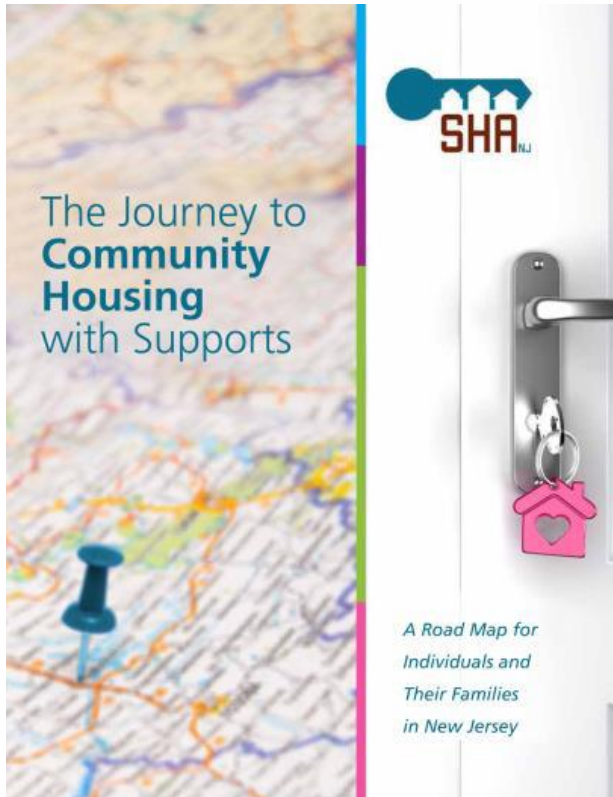
- > [Housing Guide](#)
- > [Housing Videos](#)
- > [Resource Bulletins](#)
- > [Resource Guide](#)
- > [Other Resources](#)





The Supportive Housing Association of New Jersey

www.shanj.org/housing-hub



2014 - 2020





RESOURCE BULLETINS

Affordable Housing Bulletin



Rental Assistance Vouchers Bulletin



Assistive Technology Bulletin



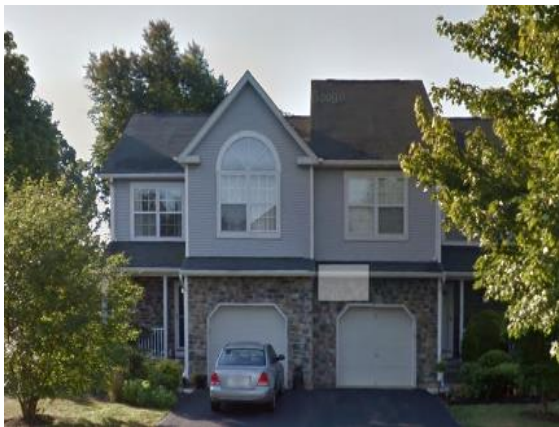
Supported Employment for Individuals with Disabilities in New Jersey Bulletin





The Supportive Housing Association of New Jersey

HOUSING VIDEOS



Matt and Dan share a home

[Supportive Housing Video](#)





The Supportive Housing Association of New Jersey

- Individual Apartments
- Shared Living
- Support Families
- Group Homes
- Intensive Specialized Group Home



- Living with Family and Receiving In-Home Supports



HOW DO YOU MAKE IT WORK FUNDING



FUNDING SOURCES

- Department of Human Services
 - Division of Developmental Disabilities
- SSI Eligibility
- Medicaid
 - HCBS Waivers - CCP
 - State Plan Services - SP
- Additional Governmental Agencies



SERVICES FUNDED THROUGH MEDICAID WAIVERS

- Community Care Program
 - Pays for specific service that are needed so that individuals with I/DD can live in the community
 - Reserved for people who require the most intensive levels of support.
 - Funds most licensed residential programs.
- Supports Program
 - Individual-directed supports accessed through the assistance of a Support Coordinator.
- MLTSS for people who are assessed to be medically eligible for these services

Affordable Housing Bulletin



Rental Assistance Vouchers Bulletin



RENTAL VOUCHERS

- Housing vouchers are a supplement so that a person does not spend more than 30% of their income on rent
- Voucher pays the balance of rent directly to the property owner



RENTAL SUBSIDIES

- Vouchers reserved for individuals of low income including those with disabilities.
- Several Different Type of Vouchers Exist
- DDD Vouchers



HOW DO I APPLY FOR DDD VOUCHERS

- DDD Services, Medicaid, NJCAT Assessment.
- Support Coordinator
- **Supportive Housing Connection**



HOUSING CHOICE VOUCHERS

- DCA or Public Housing Authorities.
- Federal Government
- Not State Specific



STATE RENTAL ASSISTANCE VOUCHERS

- DCA or Public Housing Authorities.
- State Funds
- NJ Only



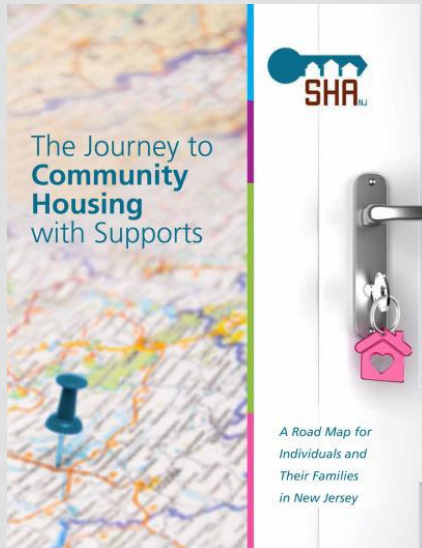
MAINSTREAM RESOURCES

Research is required to identify the eligibility criteria for each service



DOWNLOAD

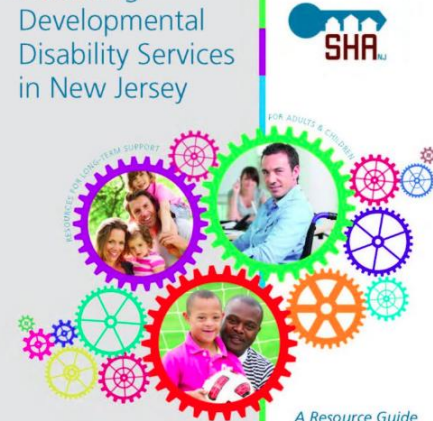
WWW.SHANJ.ORG/HOUSING-HUB



Affordable Housing Bulletin



Accessing Developmental Disability Services in New Jersey



Assistive Technology Bulletin



Supported Employment for Individuals with Disabilities in New Jersey Bulletin



Rental Assistance Vouchers Bulletin



ADVOCACY

- Increase capital funding for housing construction and rehab
- Increase the number of housing vouchers available and adequate rental subsidy
- Ensure adequate funding for supportive services
- Provide adequate rates for support staff



THERE'S NO PLACE LIKE HOME!



www.shanj.org
diane.riley@shanj.org